

Home

About Us

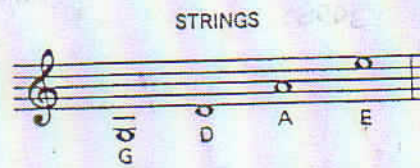
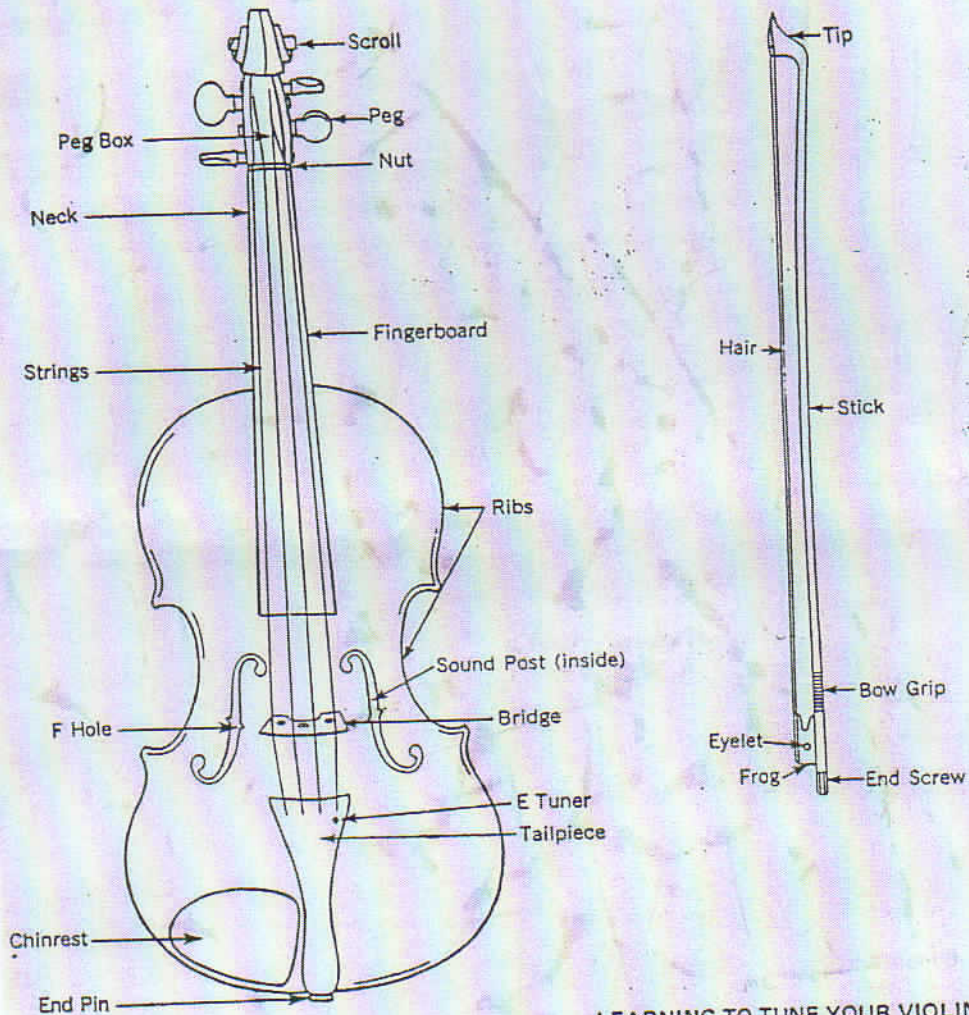
Registration

Current Students

Links

Contact Us

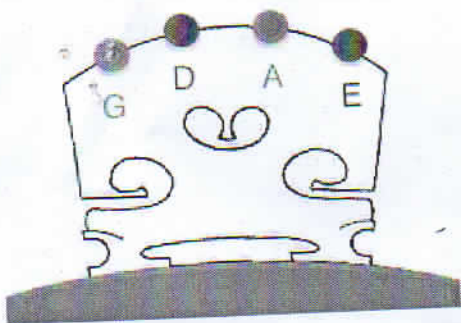
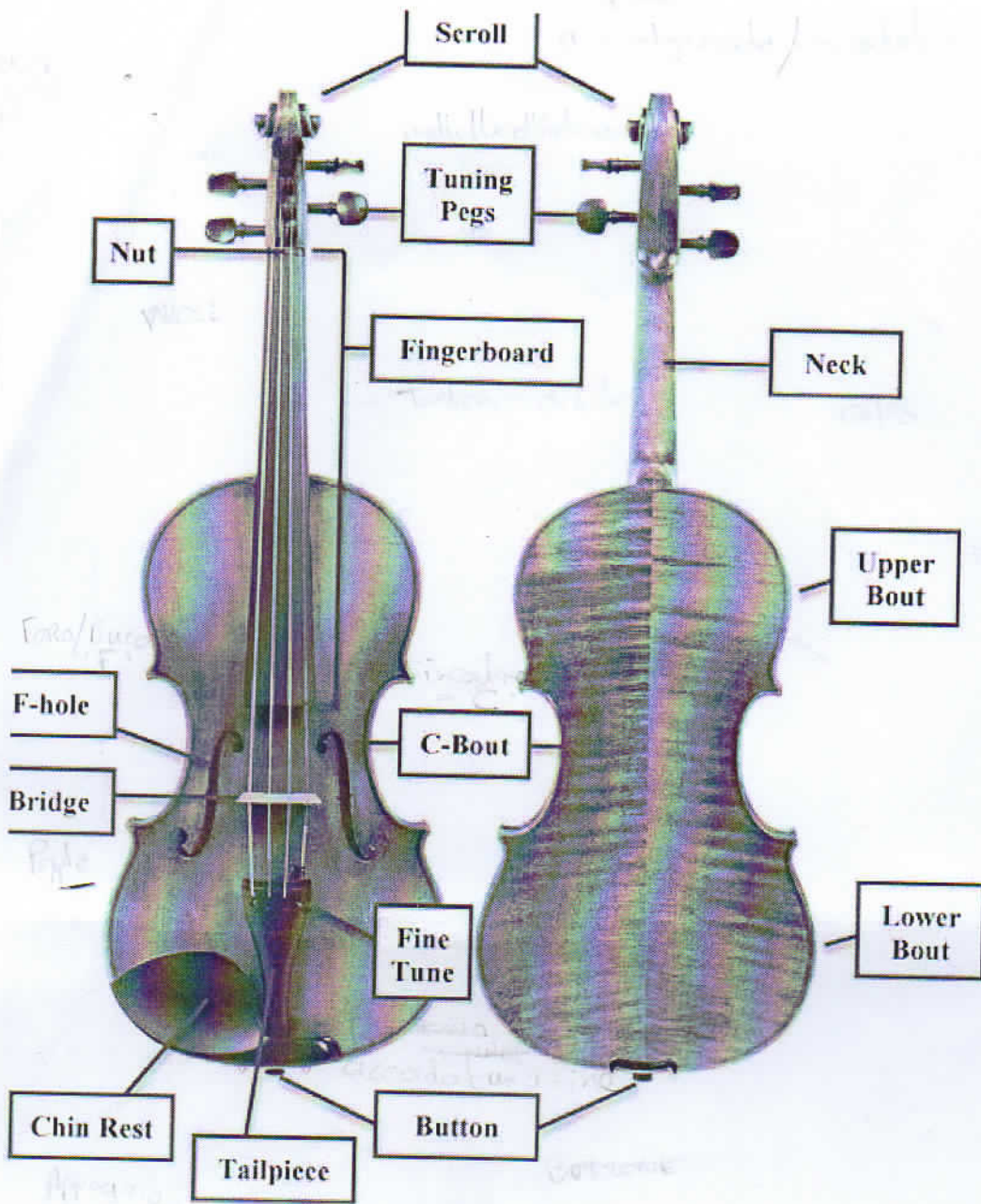
# Learning the Parts of the Violin and Bow



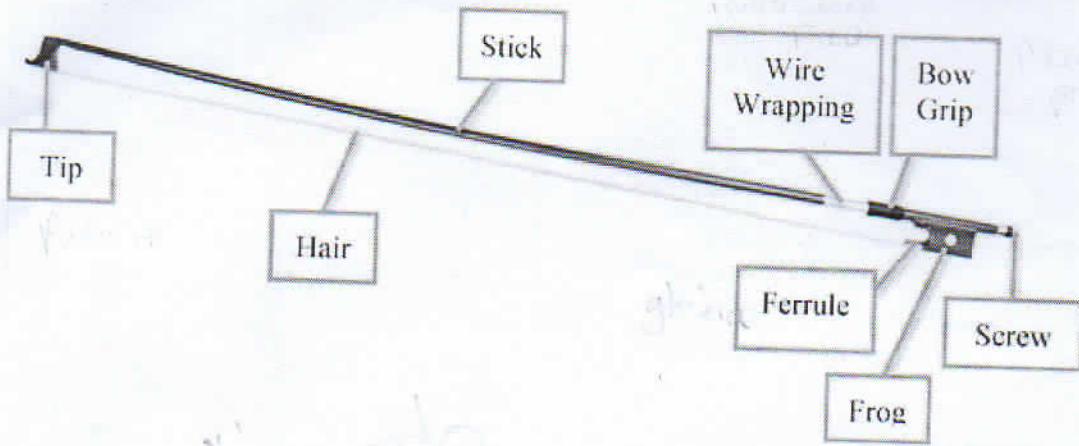
## LEARNING TO TUNE YOUR VIOLIN

It will take you some time to learn to tune your violin. At first, try to match the sound of each string to the sound on the piano or a violin tuner (4 pitch pipes, G-D-A-E), and match your violin strings to the right pitch.

Ask your teacher for tuning help.







13/6/2016

Violin\_bow\_parts.jpg (526x363)

